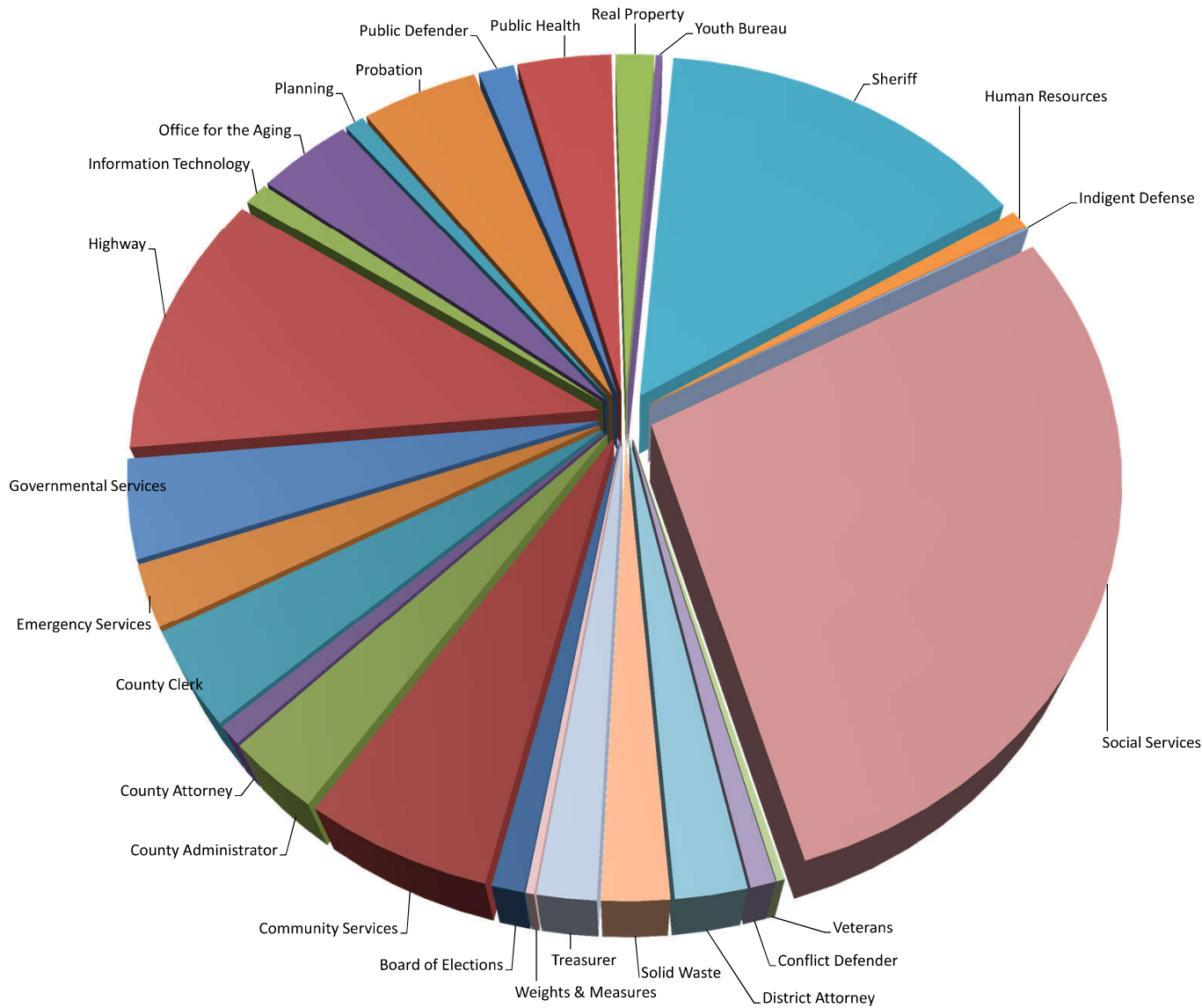


2018 FULL TIME EQUIVALENTS (FTEs)



Department	2018 FTEs	% of Total
Board of Elections	7.80	1.00%
Community Services	44.88	5.61%
Conflict Defender	6.00	0.77%
County Administrator	23.16	2.96%
County Attorney	6.00	0.77%
County Clerk	30.00	3.83%
District Attorney	17.00	2.17%
Emergency Services	19.50	2.49%
Governmental Services	31.00	3.96%
Highway	85.51	10.93%
Human Resources	6.08	0.78%
Indigent Defense	1.00	0.13%
Information Technology	7.55	0.96%
Office for the Aging	29.31	3.74%
Planning	6.00	0.77%
Probation	36.00	4.60%
Public Defender	11.00	1.40%
Public Health	29.09	3.72%
Real Property	12.00	1.53%
Sheriff	115.20	14.72%
Social Services	223.39	28.55%
Solid Waste	16.02	2.05%
Treasurer	14.00	1.79%
Veterans	2.00	0.25%
Weights & Measures	2.00	0.25%
Youth Bureau	2.08	0.27%
Grand Total	783.57	100.00%